

Oligotrophic lake of RK Mission @ Shivanahalli

Asulabha K S, Sincy V and Ramachandra T V

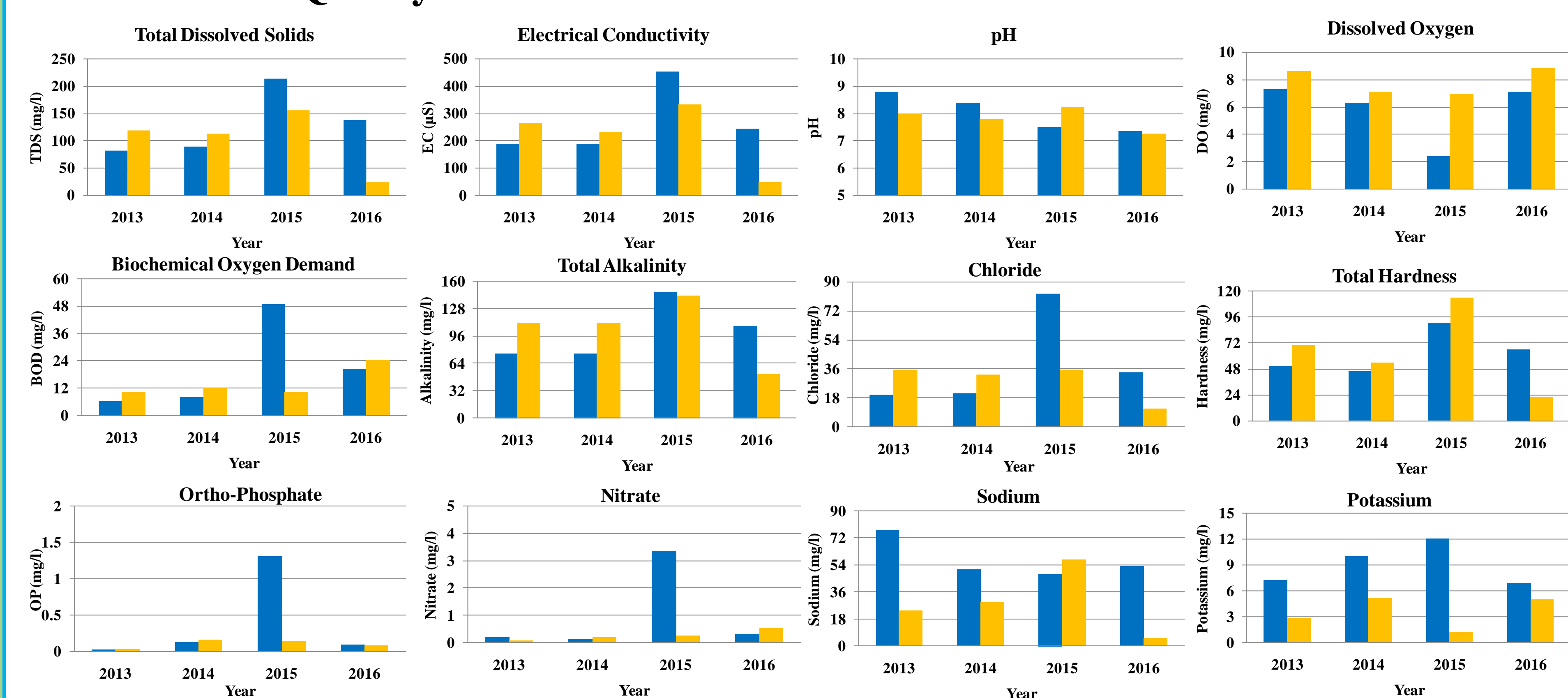
Energy and Wetland Research Group, Centre for Ecological Sciences, Indian Institute of Science, Bangalore 560012
email: cestvr@ces.iisc.ernet.in, Phone: 080 22933099, URL: <http://ces.iisc.ernet.in/energy>, <http://ces.iisc.ernet.in/biodiversity>



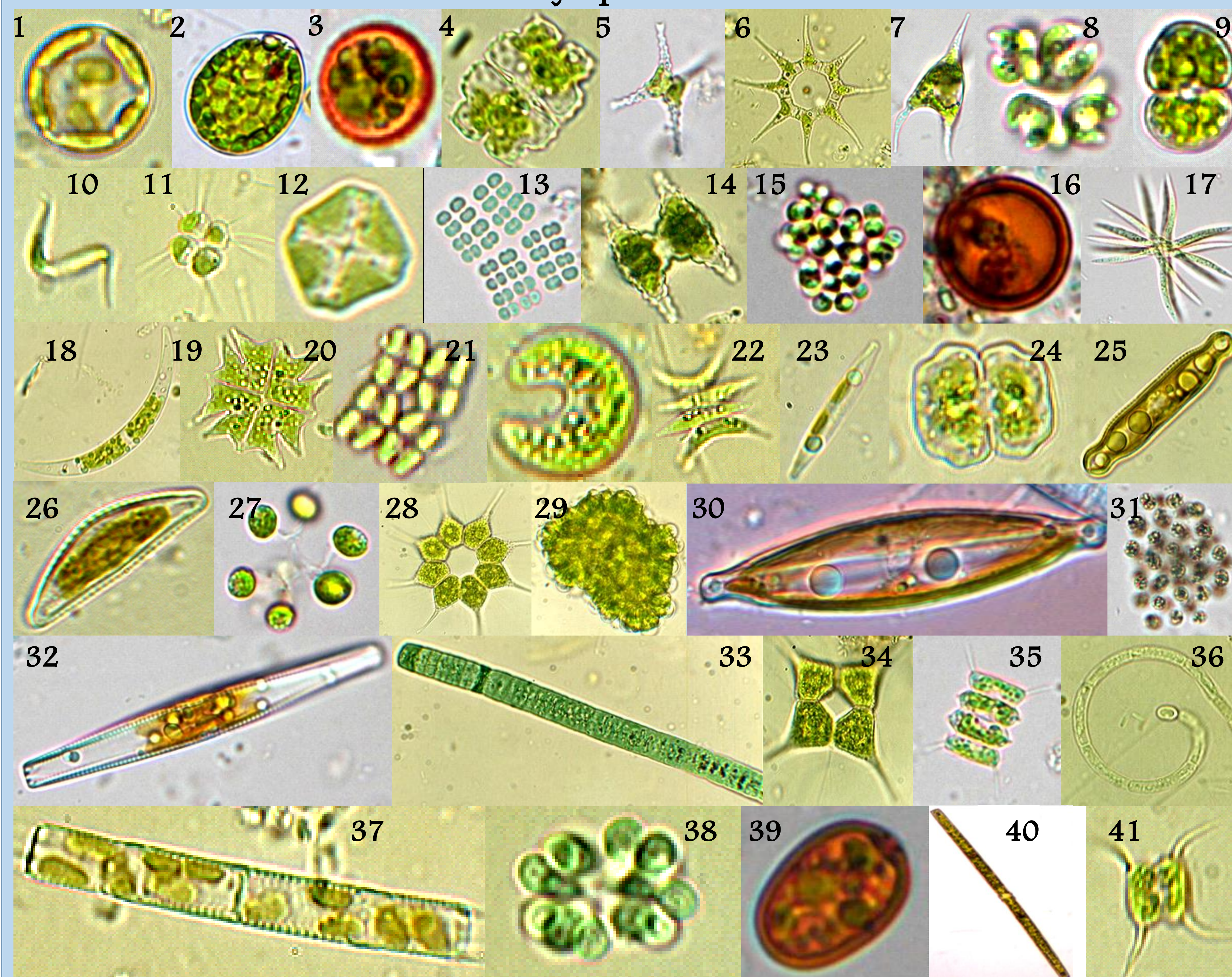
Ramakrishna Mission, Shivanahalli is a branch of the Ramakrishna Mutt and Mission, Belur. Swami Vishnumayananda of Ramakrishna Mission has played a key role in developing a barren piece of land into a forest near Shivanahalli in the vicinity of the Bannerghatta National Park. The forest has 150 different species of trees and 120 herbal plants, which serves as home to 175 varieties of birds.



Pond Water Quality

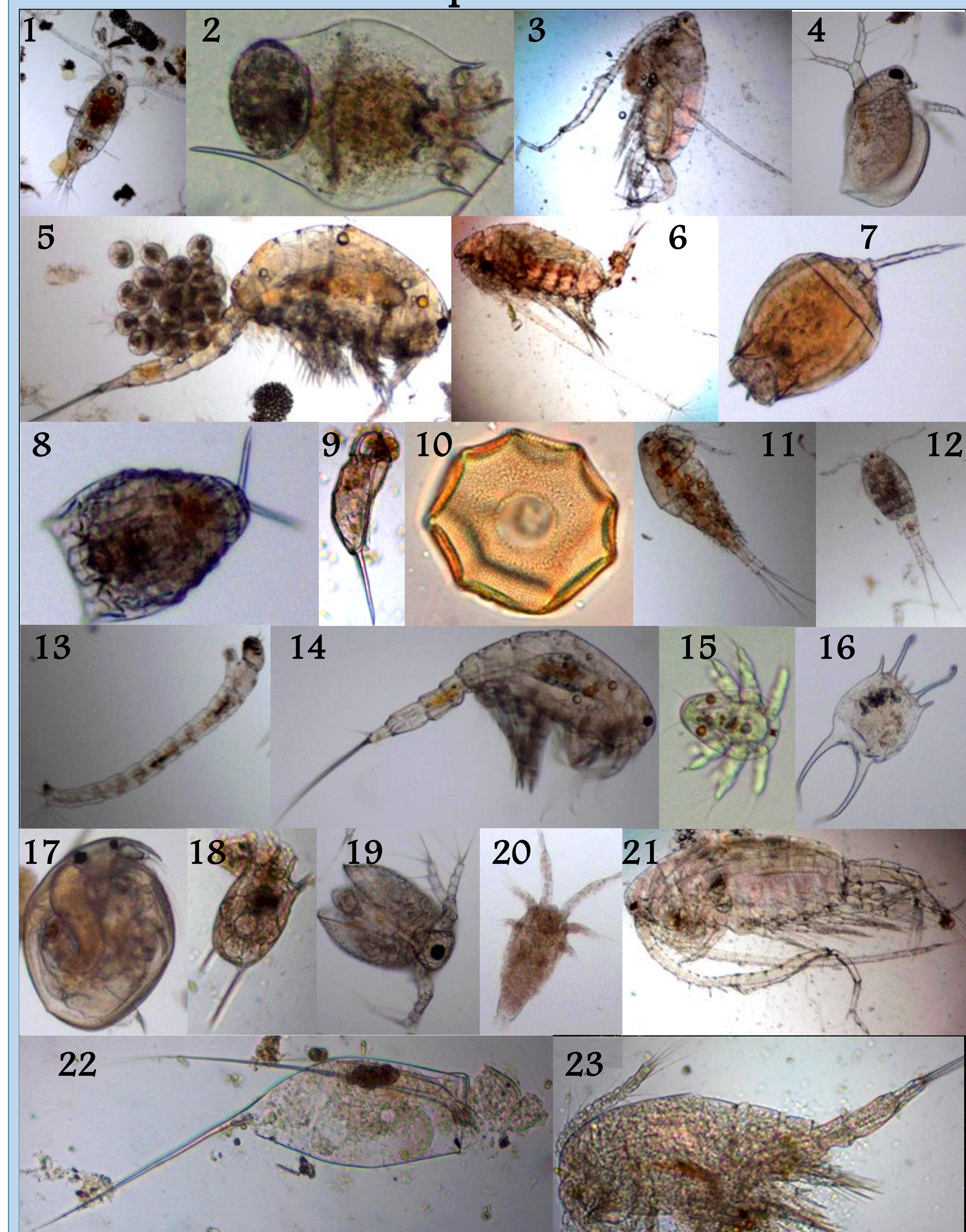


Phytoplankton



1. *Cyclotella* sp., 2. *Euglena* sp., 3. *Trachelomonas* sp., 4. *Euastrum* sp., 5. *Staurastrum* sp., 6. *Pediastrum* sp., 7. *Ceratium* sp., 8. *Kirchneriella* sp., 9. *Cosmarium* sp., 10. *Schroederia* sp., 11. *Tetrastrum* sp., 12. *Crucigenia* sp., 13. *Merismopedia* sp., 14. *Staurastrum* sp., 15. *Westella* sp., 16. *Trachelomonas* sp., 17. *Ankistrodesmus* sp., 18. *Closterium* sp., 19. *Pediastrum tetras*, 20. *Crucigenia* sp., 21. *Kirchneriella obesa*, 22. *Scenedesmus* sp., 23. *Nitzschia* sp., 24. *Cosmarium* sp., 25. *Pinnularia* sp., 26. *Cymbella* sp., 27. *Dictyosphaerium* sp., 28. *Pediastrum simplex*, 29. *Botryococcus braunii*, 30. *Navicula* sp., 31. *Microcystis* sp., 32. *Gomphonema* sp., 33. *Oscillatoria* sp., 34. *Pediastrum* sp., 35. *Scenedesmus* sp., 36. *Cylindriospermopsis* sp., 37. *Aulacoseira* sp., 38. *Coelosphaerium* sp., 39. *Trachelomonas* sp., 40. *Pleurotaenium* sp., 41. *Scenedesmus* sp.

Zooplankton



1. *Centropages* sp., 2. *Brachionus calyciflorus*, 3. *Phyllodiaptomus* sp., 4. *Ceriodaphnia reticulata*, 5. *Mesocyclops edax*, 6. *Acartia* sp., 7. and 8. *Lecane* sp., 9. *Keratella* sp., 10. *Arcella* sp., 11. *Mesocyclops leuckarti*, 12. *Mesocyclops* sp., 13. Chironomid larvae, 14. *Mesocyclops* sp., 15. Nauplius larvae, 16. *Brachionus falcatus*, 17. *Chydorus* sp., 18. *Keratella tropica*, 19. *Ceriodaphnia reticulata*, 20. Nauplius larvae, 21. *Phyllodiaptomus* sp., 22. *Filinia* sp., 23. *Microcyclops varicans*.

RK mission lake is a pristine ecosystem supporting lot of different species of phytoplankton and zooplankton. The lake water has very low ionic and organic content except in 2015 as the water level was very low.

